



Copilot+PC

intel



Copilot+PC

intel

The product images are for illustration purposes only. Actual product appearance, ports, keyboard layout, and accessories may vary by model.

- Intel Core Ultra 7 355, 8C (4P + 4LPE) / 8T, Max Turbo up to 4.7GHz, 12MB Intel Smart Cache
- 2x 16GB SODIMM DDR5-5600
- 512GB SSD M.2 2242 PCIe 4.0x4 NVMe
- Integrated Intel Graphics
- Windows 11 Pro, German
- Case color - Arctic Grey
- 1Y Premier WHB (CPN)

**Premier Support** - A direct 24x7x365 line to our most elite technicians.

- Advanced technical support, 24x7x365, in more than 100 markets
- Comprehensive hardware & OEM software support
- Single point of contact for simplified end-to-end case management
- Technical Account Managers for proactive relationship and escalation management
- Priority on service delivery and repair parts
- Lenovo Service Connect Portal for customized reporting and product support

**Accidental Damage Protection** - Protection of your PC from the unexpected.

Experience shows that a significant portion of devices may be damaged (and not covered under warranty) in the first three years. Lenovo's Accidental Damage Protection service covers accidents beyond the system warranty such as drops, spills, bumps and even electrical surges. Make sure your new device has maximum protection, avoid unplanned costs and get peace of mind.

**Base Warranty** - Included with the systems you purchase, default 1- or 3-year coverage window.

**Warranty Extensions & Upgrades** - Service and protection that's right for your circumstances.

- Pick Up & Return Courier
- Onsite Support
- Technician Installed Customer
- Replaceable Unit Service
- International Warranty Upgrade

**Recommended Accessories** Germany



**ThinkPad Dual-Mode Wireless ANC Foldable Headset 8550 (Aura Edition) - USB-A,...**  
4XD1V23301



**ThinkPad Bluetooth Presenter Mouse (Aura Edition)**  
4Y51T62792



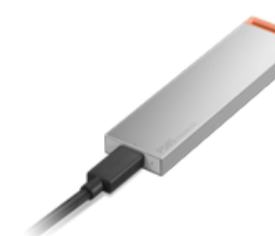
**Lenovo USB 20Gbps USB-C to USB-C Cable 1.5m**  
4X91U92143



**Lenovo 16" Laptop Everyday Backpack B510**  
4X41U80414



**Lenovo Dual USB-C 65W GaN Charger**  
GOA6065WEU



**Lenovo PS8S Portable SSD 4TB**  
4XB1T91892

>> [View More Accessories](#)

**PERFORMANCE****Processor**

Intel Core™ Ultra 7 355, 8C (4P + 4LPE) / 8T, Max Turbo up to 4.7GHz, 12MB Intel® Smart Cache

**AI PC Category**

Copilot+ PC<sup>[1]</sup>

**NPU**

Up to 49 TOPS

**Graphics**

Integrated Intel® Graphics

**Chipset**

Intel® SoC Platform

**Memory**

2x 16GB SODIMM DDR5-5600

**Memory Slots**

Two DDR5 SODIMM slots, dual-channel capable

**Max Memory**

Up to 64GB DDR5-5600<sup>[2]</sup>

**Storage**

512GB SSD M.2 2242 PCIe® 4.0x4 NVMe®

**Storage Slot**

Two M.2 slots • One M.2 2242 PCIe® 4.0 x4 slot • One M.2 2280 PCIe® 4.0 x4 slot

**Max Storage Support<sup>[3]</sup>**

Up to two drives, 2x M.2 SSD • M.2 2242 SSD up to 2TB • M.2 2280 SSD up to 2TB

**Card Reader**

SD Card Reader

**Audio Chip**

High Definition (HD) Audio, Realtek® ALC3287 codec

**Speakers**

Stereo speakers, 2W x2, Dolby Audio™

**Microphone**

2x, Array

**Camera**

FHD 1080p + IR Hybrid with Privacy Shutter

**Battery**

48Wh

**Power Adapter**

65W USB-C® (3-pin)

**Special Features**

Modern Standby

**DESIGN****Display**

14" WUXGA (1920x1200) IPS 400nits Anti-glare, 45% NTSC, 60Hz<sup>[4]</sup>

**Touchscreen**

None

**Screen-to-Body Ratio**

90%

**Color Calibration**

No Color Calibration

**Pen**

Pen Not Supported

**Keyboard**

Backlit, German

**Touchpad**

Buttonless Mylar® surface multi-touch touchpad, supports Precision TouchPad (PTP), 75 x 120 mm (2.95 x 4.72 inches)

**Dimensions (WxDxH)<sup>[5]</sup>**

313.5 x 224 x 17.5 mm (12.34 x 8.82 x 0.69 inches)

**Weight<sup>[6]</sup>**

Starting at 1.36 kg (2.99 lbs)

**Case Color**

Arctic Grey

**Case Material**

Aluminium (Top), PC-ABS (Bottom)

**Surface Treatment**

Anodizing Sandblasting (Top), Texture (Bottom)

**SOFTWARE****Operating System**

Windows® 11 Pro, German

**Bundled Software**

Office Trial + Lenovo® AI Now

**CONNECTIVITY****WLAN + Bluetooth**

Wi-Fi® 7, 802.11be 2x2 + BT5.4

**WWAN**

WWAN Not Supported

**Ethernet**

100/1000M (RJ-45)

**Standard Ports**

- 1x USB-A (USB 5Gbps), Always On
- 1x USB-A (USB 5Gbps)
- 2x Thunderbolt™ 4, with USB PD 45-65W and DisplayPort™ 2.1
- 1x HDMI® 2.1, up to 4K/60Hz
- 1x Headphone / microphone combo jack (3.5mm)
- 1x Ethernet (RJ-45)
- 1x SD card reader

**Docking**

Various docking solutions supported via Thunderbolt™. For more compatible docking solutions, please visit [Docking for ThinkBook® 14 G9 IPL](#)

**SECURITY & PRIVACY****Security Chip**

Discrete TPM 2.0 Enabled

**Physical Locks**

Kensington Nano Security Slot™, 2.5 x 6 mm

**Fingerprint Reader**

Touch Style, Match-on-Chip, Integrated in Power Button

**Other Security**

- Camera privacy shutter
- IR camera for Windows® Hello (facial recognition)

**MANAGEABILITY****System Management**

Non-vPro®

**SERVICE****Base Warranty**

1-year, Courier or Carry-in

**Included Upgrade**

1Y Premier WHB (CPN)

**ACCESSORIES****Bundled Accessories**

None

**CERTIFICATIONS****Green Certifications**

- ENERGY STAR® 9.0
- EPEAT™ Gold Registered<sup>[7]</sup>
- ErP Lot 6/26
- RoHS compliant
- TCO Certified, generation 10

**Mil-Spec Test**

MIL-STD-810H military test passed

**Other Certifications**

TÜV Rheinland® Low Blue Light (Software Solution)

**MODEL**

**TopSeller** : Yes **EAN / UPC / JAN:** 199274779627

**Announce Date:** 2026-01-26 **End of Support** : 2032-08-26

Note:

[1] Copilot+ PCs have at least 16GB RAM, 256GB storage, and a NPU that runs 40+ TOPs to run the latest AI tools build-in latest Windows 11 to accelerate productivity and creativity.

[2] Maximum memory 64GB DDR5-5600 is only to test technical readiness of notebook. Available memory to sell would vary.

- Please refer to the official [Lenovo store website](#) or contact a local Lenovo sales representative or authorized business partner for current inventory and purchase options.
- Lenovo reserves the right to change specifications without notice. To see more note information, please access the [web page](#).